



# TOP FLOOR OFFICE FOR LEASE

- 2500 PEARL STREET, BOULDER CO -

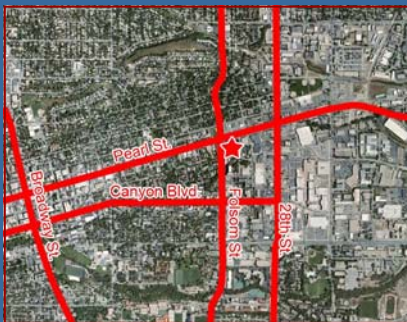


## Property Highlights

Available: Approx: 634 - 5,420 RSF  
 Lease Rate: \$24.00 NNN  
 NNN: \$9.65  
 Amenities: Starbucks, Pearl St. Mall, 29th Street Mall & Whole Foods  
 Building Signage: Available

## Additional Information

Lease out this top floor office suite at the corner of Pearl Street & Folsom and enjoy the gorgeous south west conference room with unobstructed views of the Flatirons as well as executive offices with floor to ceiling glass overlooking Pearl & Folsom.



3rd quarter 2011  
 Xceligent # 414268

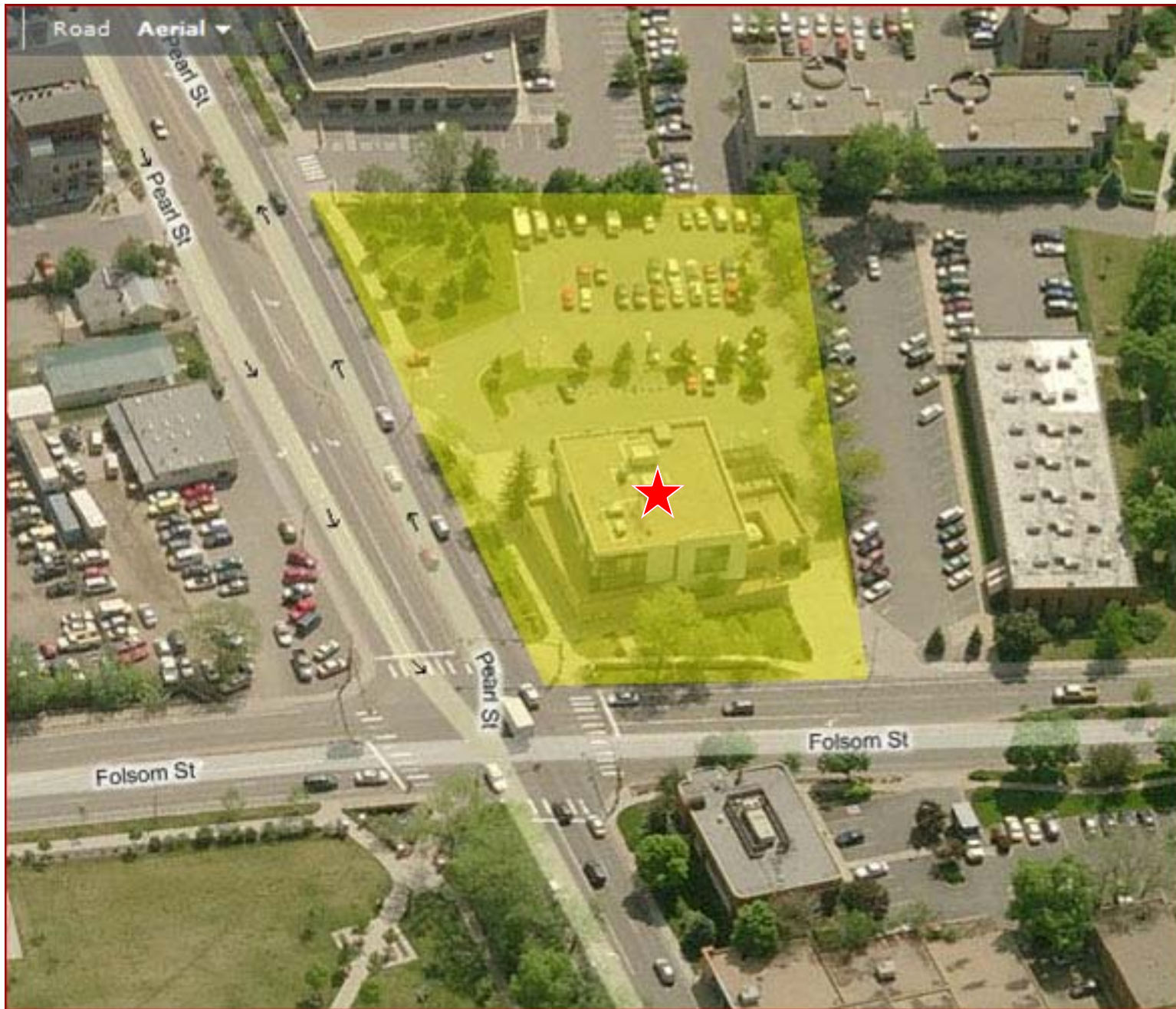
**Todd Walsh, CCIM**  
 303.449.2131 x 133  
[walsh@coloradogroup.com](mailto:walsh@coloradogroup.com)

**Jason Kruse, CCIM**  
 303.449.2131 x 149  
[jason@coloradogroup.com](mailto:jason@coloradogroup.com)

The Colorado Group, Inc. • 303.449.2131 • [www.coloradogroup.com](http://www.coloradogroup.com)  
 3434 47th Street • Suite 220 • Boulder, CO 80301

The information above has been obtained from sources believed reliable. While we do not doubt its accuracy, we have not verified it and make no guarantee, warranty, or representation about it. It is your responsibility to independently confirm its accuracy and completeness.

# Building Aerial



**Todd Walsh, CCIM**  
303.449.2131 x 133  
[walsh@coloradogroup.com](mailto:walsh@coloradogroup.com)

**Jason Kruse, CCIM**  
303.449.2131 x 149  
[jason@coloradogroup.com](mailto:jason@coloradogroup.com)

**The Colorado Group, Inc. • 303.449.2131 • [www.coloradogroup.com](http://www.coloradogroup.com)  
3434 47th Street • Suite 220 • Boulder, CO 80301**

The information above has been obtained from sources believed reliable. While we do not doubt its accuracy, we have not verified it and make no guarantee, warranty, or representation about it. It is your responsibility to independently confirm its accuracy and completeness.