

## BOULDER CREEK - OFFICE SPACE

- 4141 ARAPAHOE AVE, BOULDER CO -



### Property Highlights

- Space Available: Suite 208: 2,030 SF  
Base Rate: \$11.00 - \$15.00 NNN (term dependent)  
NNN's \$8.50  
Amenities: Ample on site parking, adjacent to the Boulder Creek path, natural setting offers outside areas in a park like setting. Bike path and bus routes offer great access for employees and clients alike.

### Additional Information

Located on the Boulder Creek and the Boulder bike path this building is ideally located and offers great access to Denver and Longmont via Foothills Parkway and Arapahoe Road. Offices and balconies offer unobstructed views of the Foothills in a natural setting.



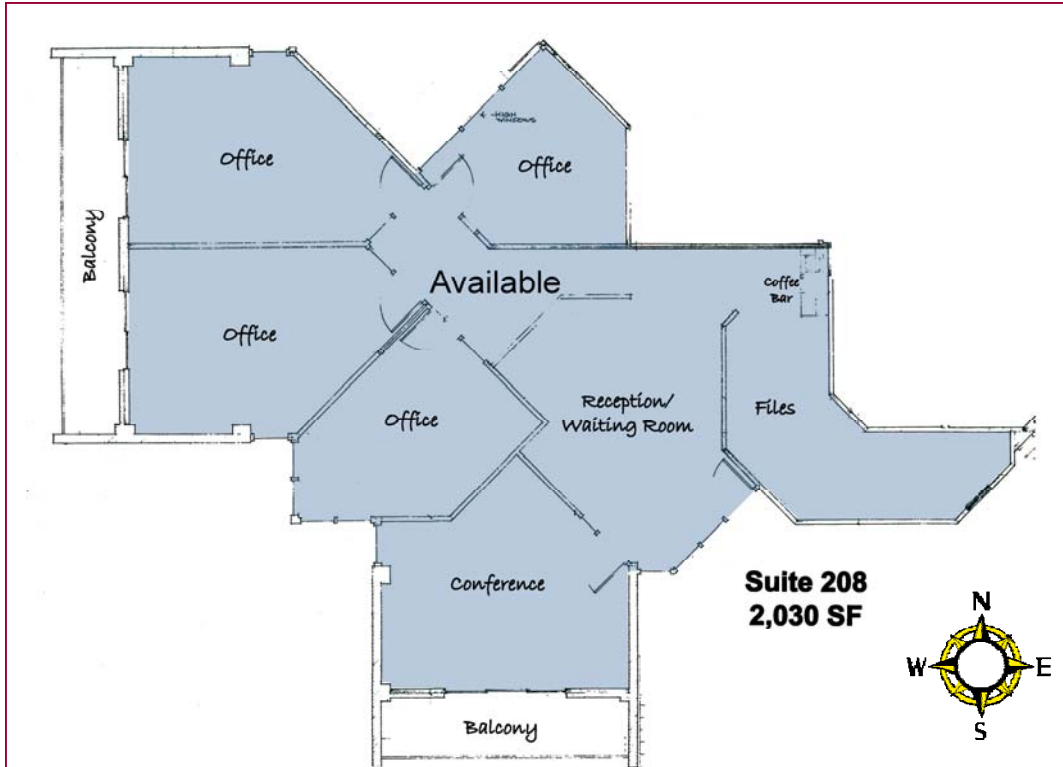
4th quarter 2009  
Xceligent # 455810

**Todd Walsh, CCIM**  
303.449.2131 x 133  
[walsh@coloradogroup.com](mailto:walsh@coloradogroup.com)

**Jason P. Kruse, CCIM**  
303.449.2131 x 149  
[jason@coloradogroup.com](mailto:jason@coloradogroup.com)

The Colorado Group, Inc. • 303.449.2131 • [www.coloradogroup.com](http://www.coloradogroup.com)  
3434 47th Street • Suite 220 • Boulder, CO 80301

# Floor Plan



# Aerial



**Todd Walsh, CCIM**  
303.449.2131 x 133  
[walsh@coloradogroup.com](mailto:walsh@coloradogroup.com)

**Jason P. Kruse, CCIM**  
303.449.2131 x 149  
[jason@coloradogroup.com](mailto:jason@coloradogroup.com)

The Colorado Group, Inc. • 303.449.2131 • [www.coloradogroup.com](http://www.coloradogroup.com)  
3434 47th Street • Suite 220 • Boulder, CO 80301

The information above has been obtained from sources believed reliable. While we do not doubt its accuracy, we have not verified it and make no guarantee, warranty, or representation about it. It is your responsibility to independently confirm its accuracy and completeness.